

County Engineering

OUR GOAL

Deliver civil and structural engineering services at a local level to support sustainable development, enhancing the quality of life in communities.

OUR STAFF

Our team consists of 95 staff members with 15 years of average experience per team member, and 27 licensed professionals. To maintain a high level of expertise and professionalism, Chastain houses a 24/7 online university for staff to access accredited courses to continue their education and further develop their skill set.

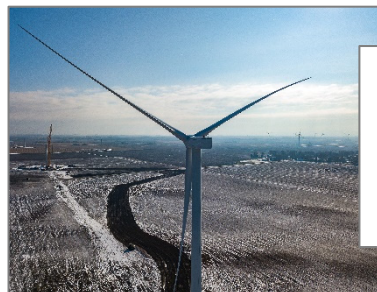
QUALITY ASSURANCE

Chastain implements a QA/QC Plan tailored to each project to pledge our commitment to delivering a high-quality project each and every time. This Plan provides a means in which to ensure our efforts are efficient, complete, constructible, and sustainable throughout the duration of the project.

For more than 65 years, Chastain has been helping county officials improve their highways, roads, and bridges while providing cost-efficient engineering solutions.

With two retired Illinois county engineers on staff having more than 59 years of combined experience as county engineers, we understand first-hand what issues and challenges county officials face today. Our structural engineers have more than 75 years of combined experience with county/township bridge projects and have completed more than 500 county or township structure projects in their careers. Our unique insight and depth of knowledge working with counties are one of the main reasons Chastain works for a third of all the counties within the State of Illinois.

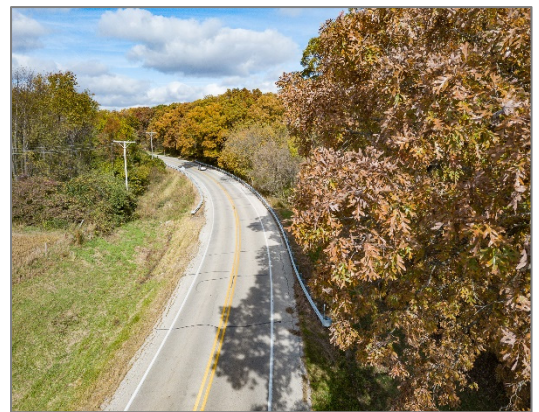
In addition to providing civil and structural engineering to counties and townships, Chastain is quickly becoming a leader in Illinois, representing local agency's interest during wind farm construction activities. Renewable energy has suddenly powered its way into the mainstream. Illinois is the sixth largest state producing wind energy, it can sometimes be a better investment than conventional energy, according to the U.S. Energy Information Administration.



**Lee County Highway Department
Mendota Hills Wind Farm**
View the demolition in action on YouTube using the QR code above.



**DeKalb County Highway Department
Somonauk Road Bridge Replacement**



**Rock Island County Highway Department
HSIP Funded Countywide Guardrail Analysis**



"The Consultant utilized their staff efficiently to cover the project and was very cooperative in working with the County."

**- DuPage County DOT
North and Central Pavement Maintenance**

chastainengineers.com
Toll-free 1.833.4Chastain
Illinois | Wisconsin | Indiana | Kentucky

**CHASTAIN
& ASSOCIATES LLC**
CONSULTING ENGINEERS
SERVICE | SOLUTIONS | COMMITMENT™

OUR HISTORY

Homer and his brother Edward Chastain founded the firm in the spring of 1954 in Decatur, Illinois. After being awarded a 909,000 square foot facility expansion project for Caterpillar, the brothers mortgaged everything they owned to meet the increased payroll and staffing demands of the project.

Chastain continued to grow and established itself at the forefront of consulting firms that began to emerge with the creation of the Interstate Highway System in the 1950's and 1960's.

Throughout the decades, Chastain has continued to expand and today has established branch offices in Schaumburg, Rockford, Benton, Paris, and Champaign, Illinois, as well as offices in Lafayette, Indiana, Paducah, Kentucky, and Beloit, Wisconsin. Most recently, we have strengthened our land development and municipal engineering services while expanding our services in water and wastewater treatment plants and pump stations.

Today, we are guided by the principles of building and maintaining long-lasting client relationships. We are dedicated to providing responsive, quality engineering using a team approach, half a century of hands-on experience alongside current technology.

Municipal Engineering

- Arterials, Local Roads, Streets and Alleys, and Multi-Use Paths
- Storm Water Management
- Pavement Management & Design Services
- Floodplain / Drainage Analysis & Design
- Detention/Retention
- GIS Databases & Mapping Services
- Traffic Signals
- Pedestrian Traffic Flow
- Parking Lots, Sidewalks, Ramps and ADA Accessibility
- Regulatory & Permit Compliance
- Grant Writing
- Master Planning
- Water Resources: Drinking Water, Distribution Systems & Treatment Plants
- Wastewater: Treatment Plants, Collection Systems & Pump Stations

Transportation Engineering

- Expressways, Interstates, Tollways, & Highways
- Safety and Feasibility Studies
- Location Design Studies
- Traffic Studies
- Intersection Design Studies
- Location Drainage Studies

Structural Engineering

- Bridges and Culverts
- Structural Analysis, Evaluation & Design
- Structural Rehabilitation
- Footings & Foundations Design
- Falsework and Shoring
- Retaining Walls / Landscape Walls

Railroad Engineering

- Rail Sidings
- Industrial Rail Yards
- Crossing Safety

Land Acquisition

- IDOT-Certified Land Negotiator

Surveys

- Boundary
- 3D Laser Scanning
- Hydrographic Surveys
- ALTA/ACSM Land Title Surveys
- Right-of-Way
- Record Drawings
- Topographic Mapping
- Horizontal and Vertical Controls
- Legal Descriptions
- Deed Interpretation and Boundary Dispute Resolution
- Forensic Surveys
- Commercial Subdivisions
- Municipal Annexations
- Aerial Survey Control / Ground Control for Aerial Mapping

Construction Engineering

- Construction Management / Owner Representation
- Observation / Inspection
- Documentation of Materials and Quantities
- Record Keeping / Specification Compliance
- Construction Layout & Staking
- Construction Issue Resolution
- Review of Contractor Pay Requests
- Constructability Reviews

Land Development

- Site Analysis & Master Planning
- Zoning Petitions and Submittals
- Public Outreach
- Residential Subdivisions
- Commercial Subdivisions
- Grant Writing
- Site Level Drainage Design
- Preliminary Plats
- Final Plats